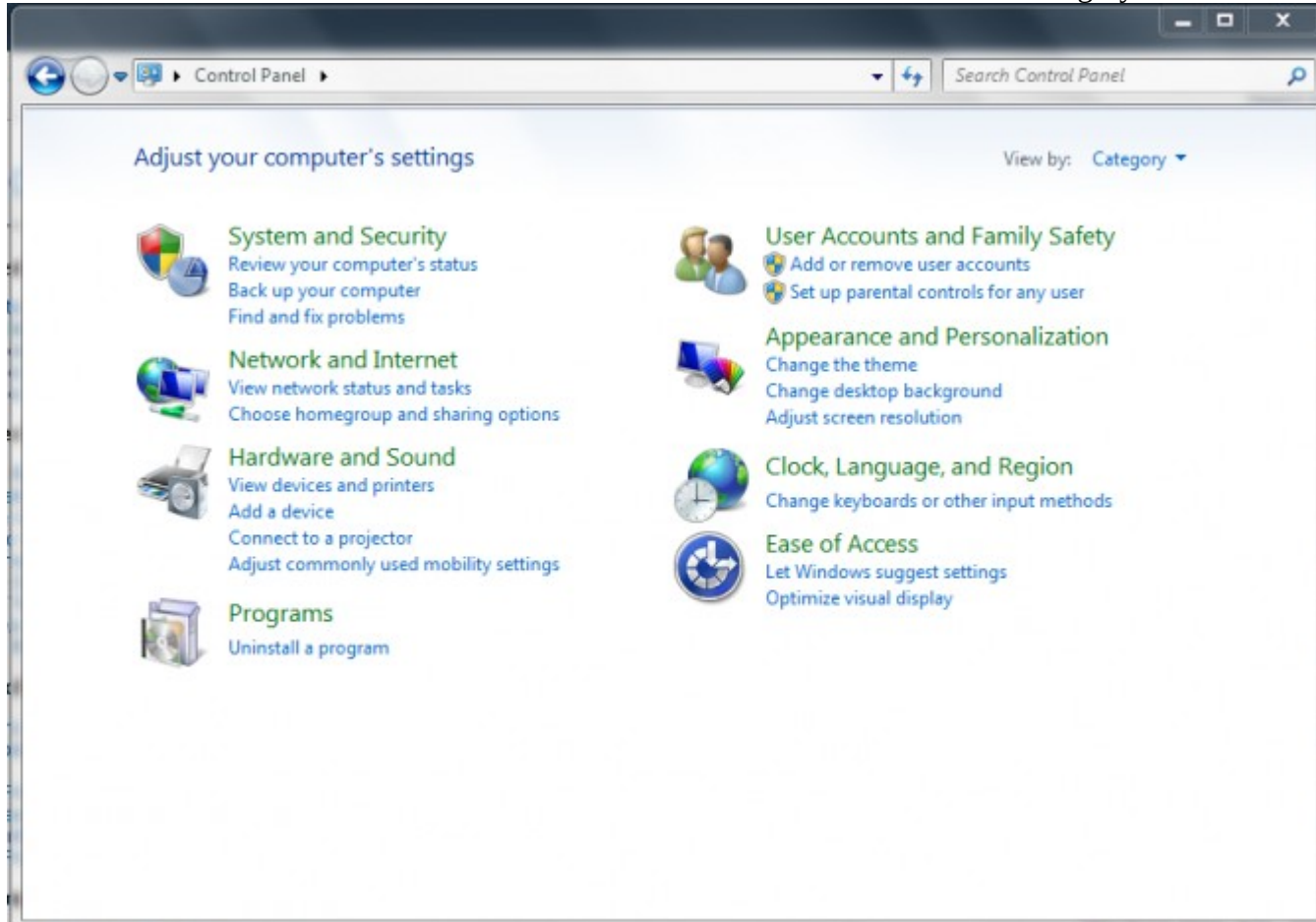
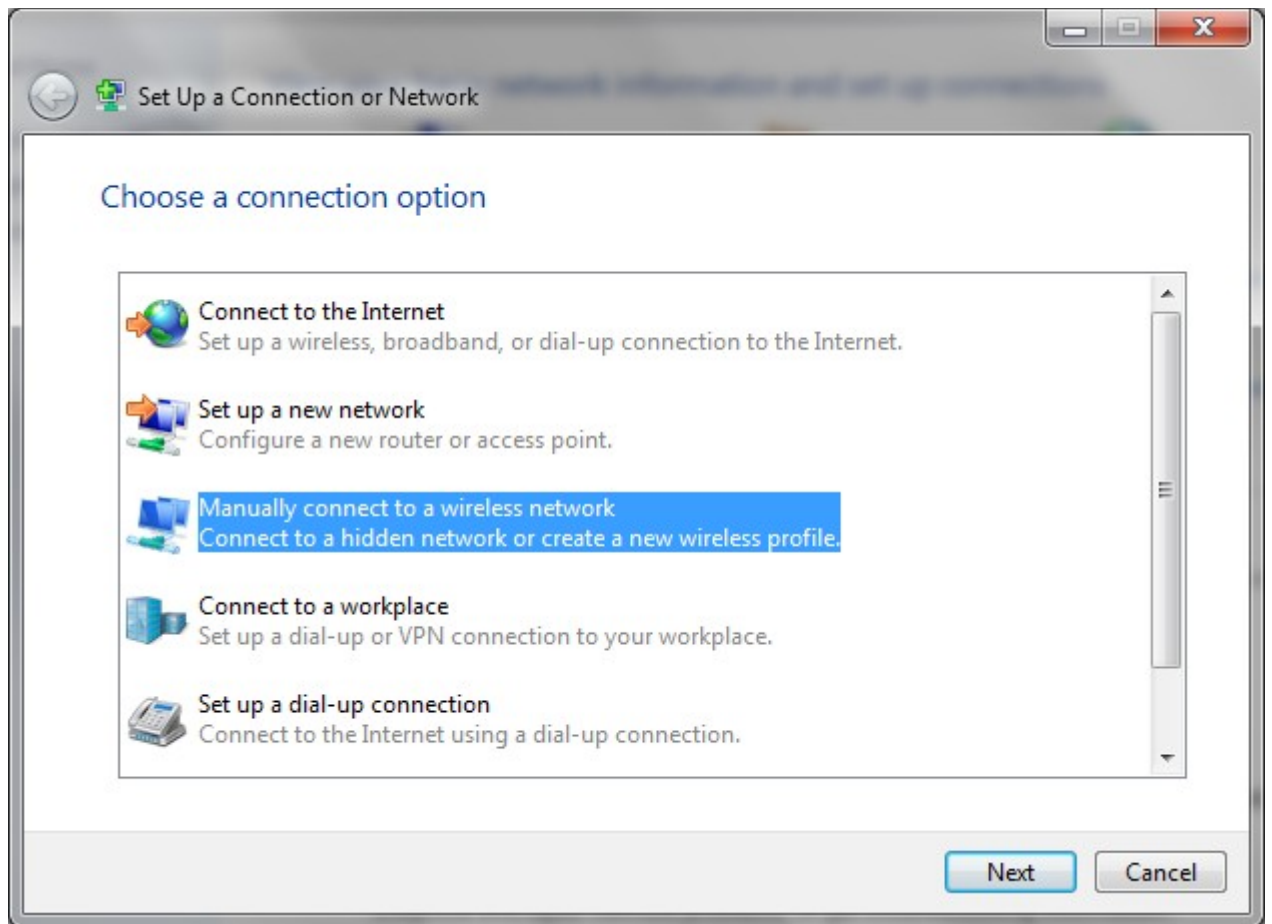


# Connecting to the eduroam wireless network using Windows 7

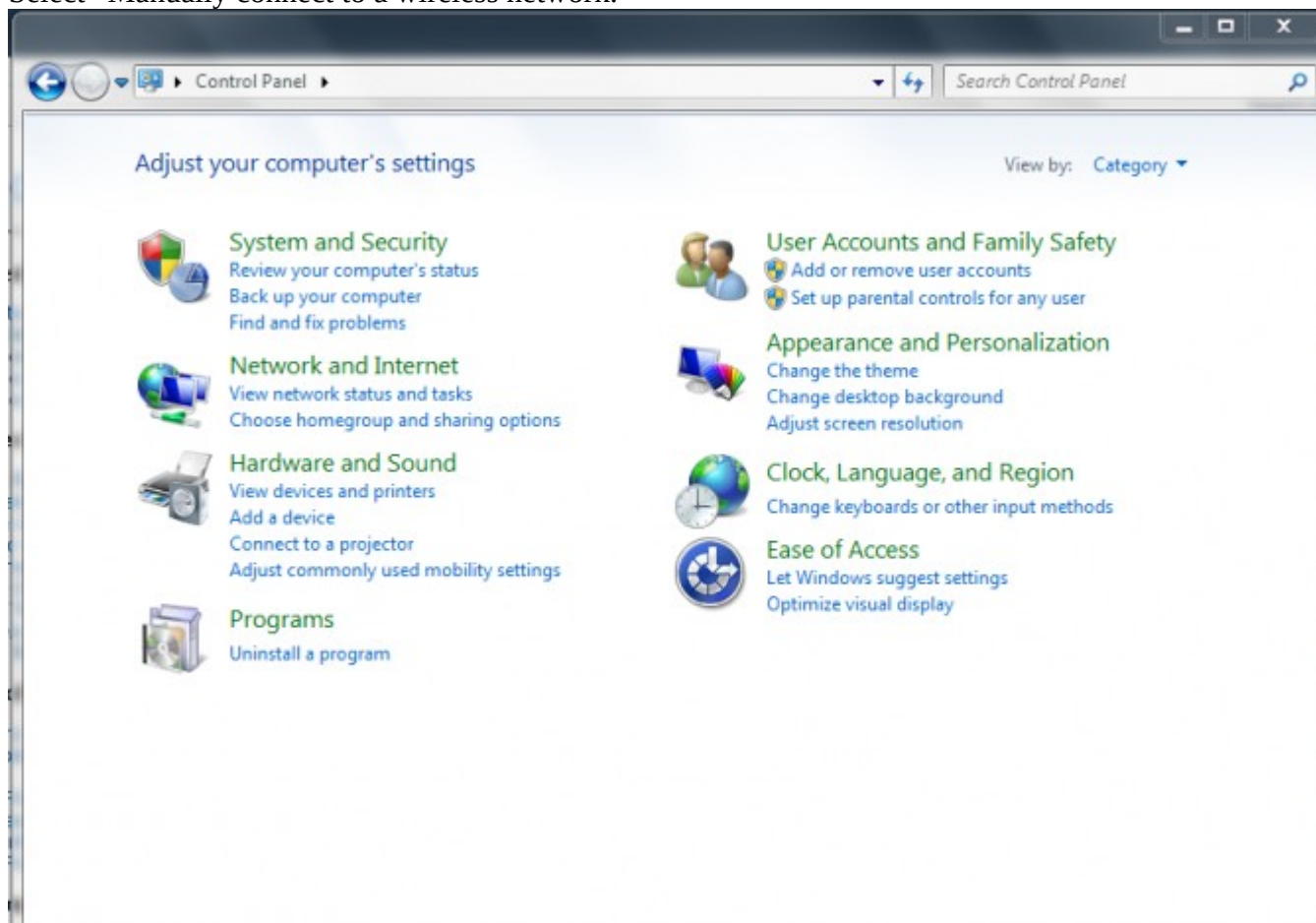
1. At the Start menu type **Control Panel** and select the search result.
2. Select the **View network status and task** link under the **Network and Internet** category.



3. Select **Set up a new connection or network**.

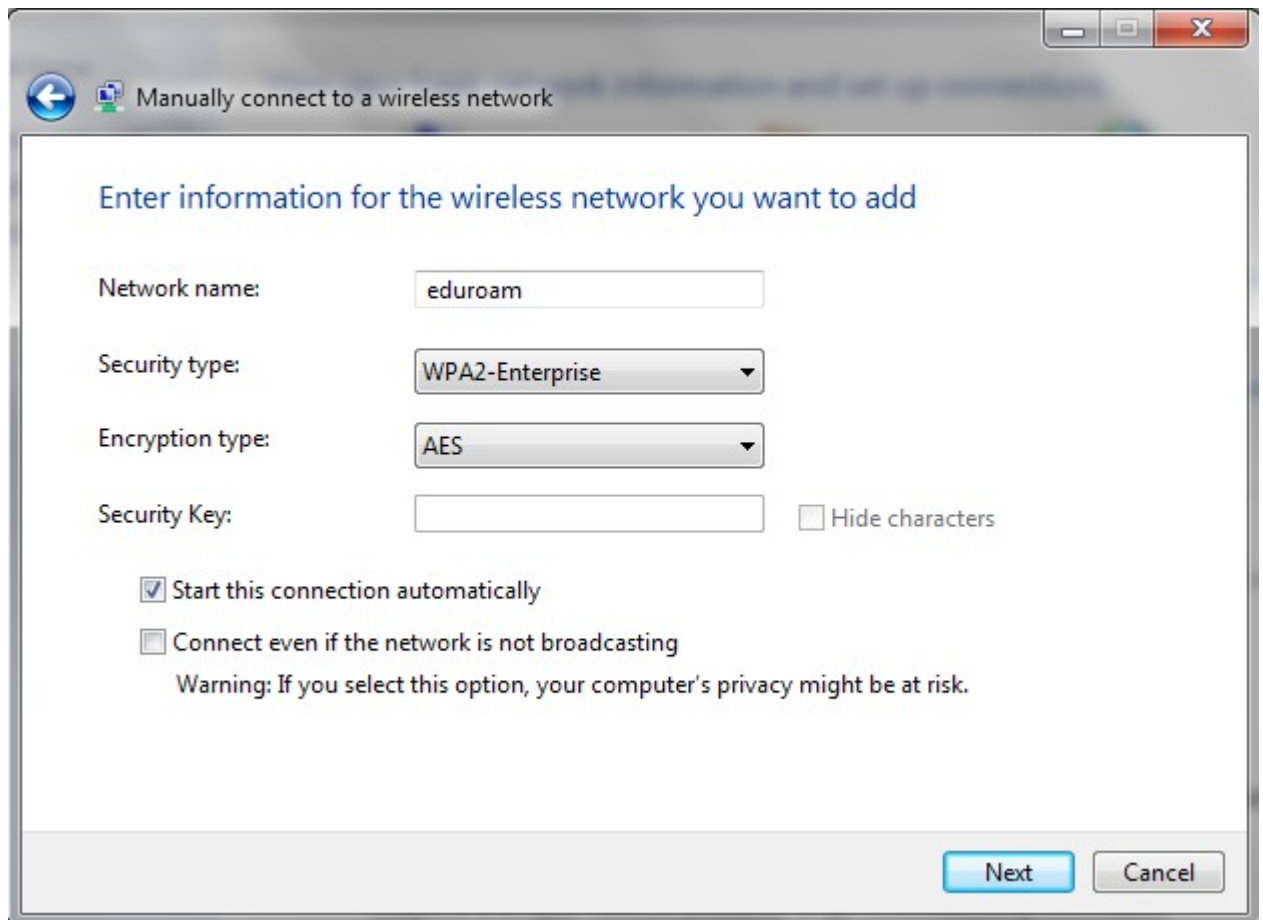


4. Select “Manually connect to a wireless network.”



5. Type in the following information:

- Network name: **eduroam** (it's important you type this in lower case only)
- Security type: **WPA2-Enterprise**
- Encryption type: **AES**
- Select the check mark next to **Start this connection automatically**.
- Click **Next**.

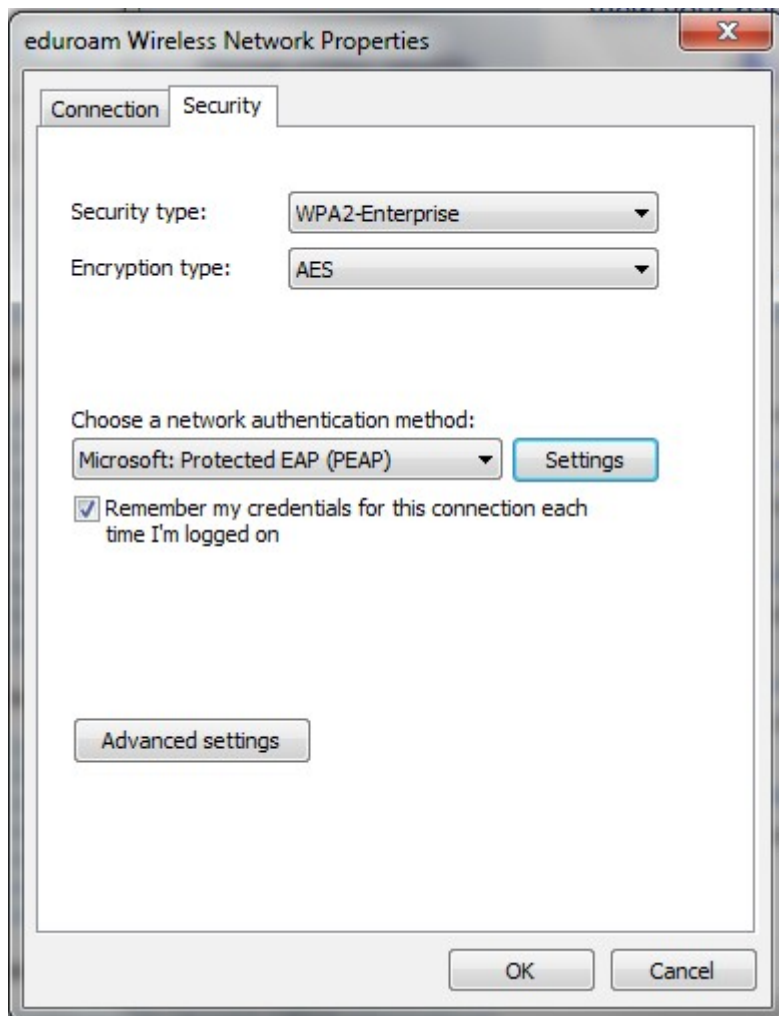


The screenshot shows a Windows dialog box titled "Manually connect to a wireless network". The main heading is "Enter information for the wireless network you want to add". The form contains the following fields and options:

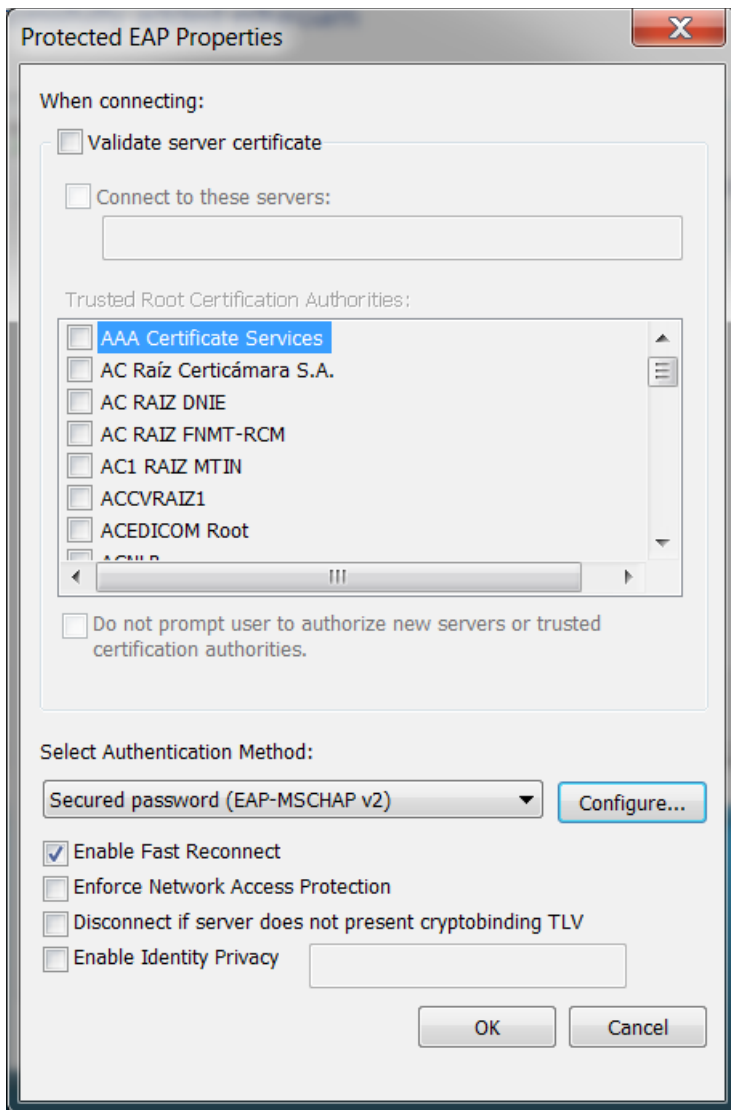
- Network name:** A text input field containing "eduroam".
- Security type:** A dropdown menu set to "WPA2-Enterprise".
- Encryption type:** A dropdown menu set to "AES".
- Security Key:** An empty text input field, followed by a checkbox labeled "Hide characters" which is currently unchecked.
- Start this connection automatically:** A checked checkbox.
- Connect even if the network is not broadcasting:** An unchecked checkbox, with a warning message below it: "Warning: If you select this option, your computer's privacy might be at risk."

At the bottom right of the dialog, there are two buttons: "Next" (highlighted in blue) and "Cancel".

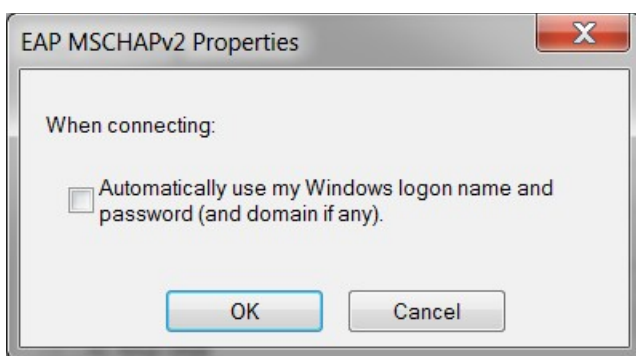
6. **Select Set up a new connection or network.**
7. Select the **Security** tab.



8. On the Protected EAP Properties window:
- Check Off "**Validate server certificate**"



9. Select “Configure” next to the “Select Authentication Method” and ensure “Automatically use my Windows logon name and password (and domain if any)” is unchecked.



At the eduroam Wireless Network Properties (security tab), select Advanced Settings.


10. Under “802.1X Settings” select: Specify authentication mode.
  - Select 'Save credentials' and enter your username@sun.ac.za and password.
  - Ensure that User authentication is selected.

Windows Security



## Replace credentials

Saving your credentials allows your computer to connect to the network when you're not logged on (for example, to download updates).

	<input type="text" value="user@sun.ac.za"/>
	<input type="password" value="••••••••"/>

OK

Cancel